

# BEWONERSAVOND KANIS

29 OKTOBER 2014



gemeente  
WOERDEN

beeldverslag:  
ronald van der heide

RVANH 02

WWW.ROMALDVANDERHEIDE.NL

## DOEL



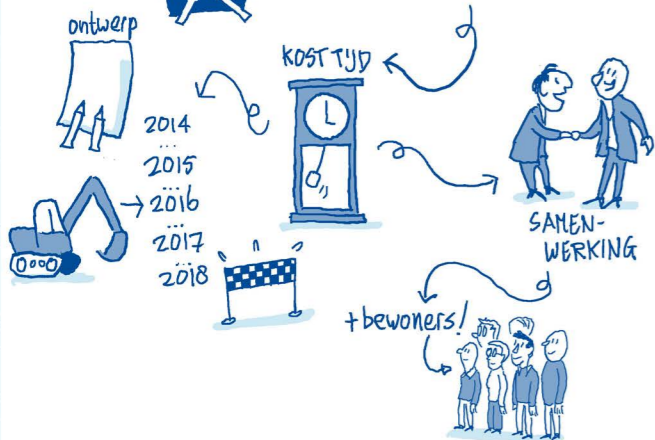
## AANLEIDING

WATEROVERLAST  
+  
BODEMDALING

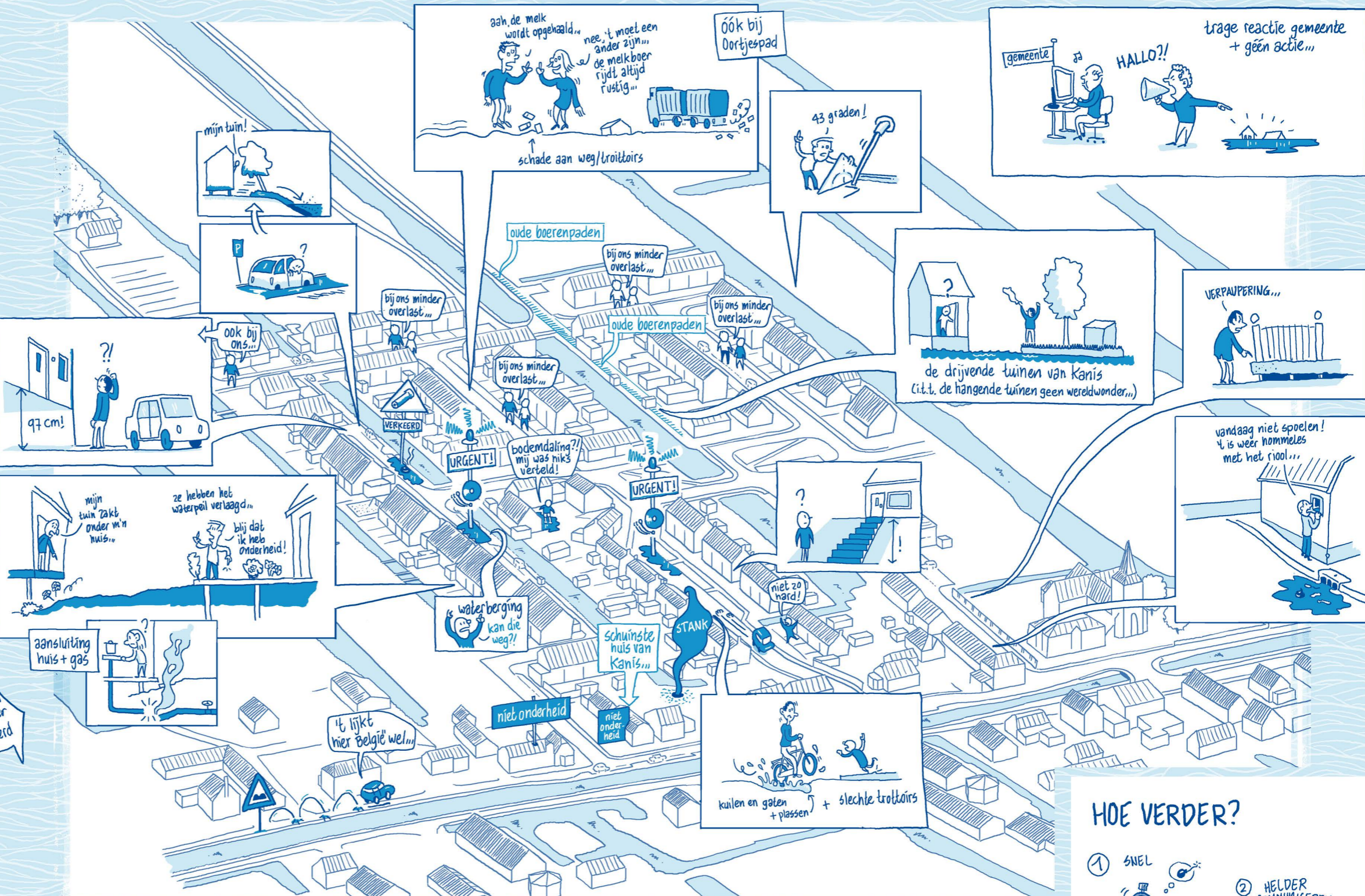
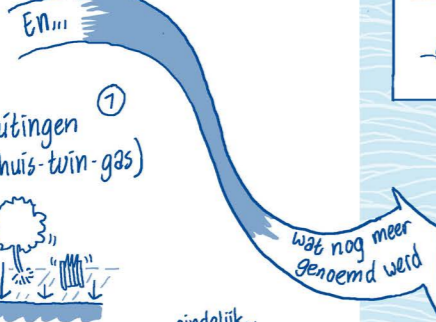


conventionele oplossingen

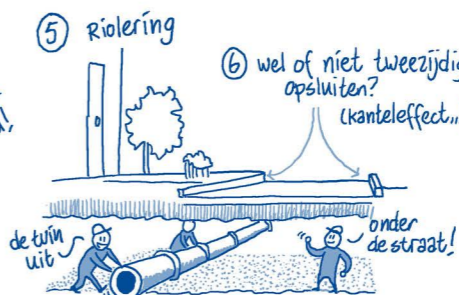
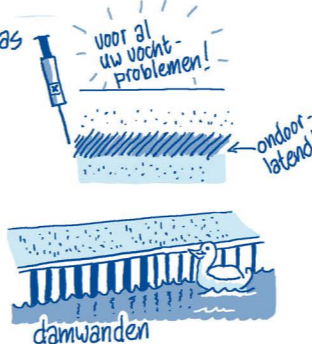
INNOVATIE!



## GROOTSTE PUNTPUNTEN



## OPLOSSINGEN



## HOE VERDER?

- 1 SNEL
  - 2 HELDER COMMUNICEREN
  - 3 ENNE...
  - geen proefkonijn!
  - PRAKTISCH!
- dit is mis... graag als... wat werkt...